

Low Pressure Pipes

Irrigation Tube - MDPE

Extensive range of solid wall plastic irrigation tube made from Medium Density Polyethylene (MDPE). Tubes made from this family of materials have excellent flexibility and outstanding chemical resistance. Other advantages are low weight and good mechanical properties at low temperatures. Compared to other materials the frictional loss of PE pipes is very good.

The tubing is manufactured in a range of sizes designed to standard DIN 8074 SDR 11 dimensions. The black polymer offers excellent UV & low temperature resistance. Each size is manufactured in long length coils, which can be individually wrapped for easy handling & storage. Tooling is available to also manufacture this type of pipe to imperial sizes meeting the specifications of BS 1972/3284.



Polyethylene Irrigation Tube - OD	Code	Standard Length	Nominal Wall	Nominal ID
20mm	840	100 metre	2.0mm	16.2mm
25mm	841	100 metre	2.3mm	20.4mm
32mm	842	100 metre	3.0mm	26.0mm
40mm	843	50 & 100 metre	3.7mm	32.6mm
50mm	844	50 & 100 metre	4.6mm	40.8mm
63mm	845	50 & 100 metre	5.8mm	51.4mm

Pressure Pipe

Manufactured from HDPE, MDPE and LDPE, in a range of sizes conforming to DIN standards.



Pressure Pipe - OD	Standard Length	DIN Rating
25mm	50 & 100 metre	SDR 11
33mm	50 & 100 metre	SDR 11
50mm	50 & 100 metre	SDR 11
63mm	50 & 100 metre	SDR 11 + 17.6
76mm	50 & 100 metre	SDR 11 + 17.6

Pump Delivery - LDPE

Range of solid wall plastic water delivery pipe made from Low Density Polyethylene (LDPE). The pipe is produced in a range of sizes specifically designed to ensure a proper fitting with lever type pump couplings.

The polymer configuration & black colour are designed for maximum UV & weather resistance.

This range is ideally suited for the conveyance of slack water and light slurry. The pipes have been independently pressure tested to meet the requirements of most pump delivery applications. Longer continuous lengths, coils, or special colours are available to order.



Delivery Pump OD	Code	Standard Length	Weight	Pack Size
2"	D876	6 metre	5 Kgs	140
3"	D877	6 metre	8 Kgs	100
4"	D878	6 metre	11 Kgs	64
6"	D879	6 metre	22 Kgs	24
8"	D880	6 metre	32 Kgs	16

MetroSmooth PE Cable Ducting

Rigid Cable Ducting - HDPE

A range of solid wall plastic ducting made from High Density Polyethylene (HDPE). The standard colour is orange but other NJUG and local authority colours are available on request.

Each length is supplied with an easy-fit coupler.

Duct can be supplied with hot foil embossed or inkjet printing where required. Standard print stereotypes include "Street Lighting" "Amenity Lighting" "Traffic Signals" "Electrical Cable" etc.

Special printing, diameters, wall thicknesses, colours and non-standard lengths are available to order.



Rigid Cable Ducting OD	ID	Wall	Pack Size
63mm	56mm	3.5mm)170
	53mm	5.0mm)
90mm	83mm	3.5mm)75
	80mm	5.0mm)
107mm	100mm	3.5mm)55
	97mm	5.0mm)
110mm	103mm	3.5mm)55
	100mm	5.0mm)
160mm	150mm	5.0mm)25

Coilable Electrical Cable Ducting - PE

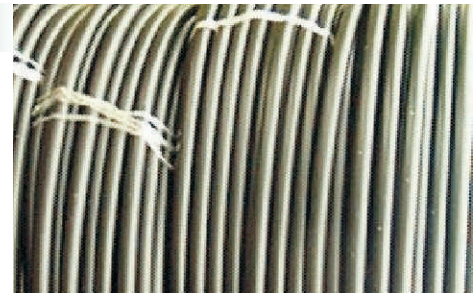
A range of smooth bore plastic ducting made from solid wall Polyethylene (PE).

This product range has exceptional impact resistance and durability. It remains flexible even at low temperatures and meets the dimensional requirements of BSEN 50086-2-4.

The duct is embossed with the legend 'Electric' at 1 metre intervals.

Whilst product is offered in coils as standard, straight lengths of 3 metres or 6 metres are available on request.

The standard colour for the ducting is black; special colours and wall thicknesses are available on request.



Coilable Electric Cable Ducting - ID/OD	Wall	Standard Length
32/37mm	2.5mm	50 or 100 metre
38/44mm	3.0mm	50 or 100 metre
50/60mm	5.0mm	50 or 100 metre

Waste Pipes

Solvent Waste Pipes - PVC

Solvent Waste Pipe - PVC tubing is available in White. Special colours and printing are available to order.



Solvent Waste Pipe - OD	Code	Standard Length
21.5mm (Overflow)	C870	3 or 4 metre
32mm		3 metre
40mm		3 metre
50mm		3 metre

Solvent Waste Pipes - ABS

Range of waste & pressure pipes from Acrylonitrile Butadiene Styrene, otherwise known as ABS. Tubes made from this tough material will have excellent impact strength, good chemical resistance and are biologically inert. ABS is also a non-toxic material and has advantages over other polymers when used at temperatures as low as - 40°C. All ABS tube manufactured by Naylor Specialist Plastics can be joined using proprietary brands of solvent cement.

Standard stock compounds are available in White, Grey & Black; lengths can be supplied plain or printed with your corporate message. We have existing tooling to enable us to produce tubes of various sizes and wall thickness. Specifying close dimensional tolerances will ensure compatibility with existing proprietary fittings. Tubes can also be manufactured with an above average wall thickness, as ABS has particularly good machining properties and is especially suited for threaded tube.

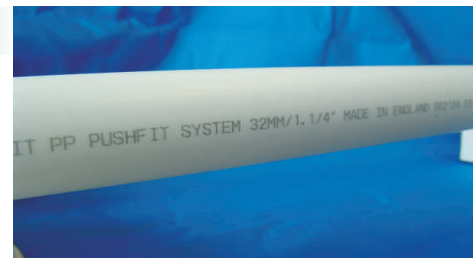


Solvent Waste Pipe ABS - OD	Colours	Code	Standard Length
32mm	White, Grey & Black	C366	3 metre
40mm	White, Grey & Black	C367	3 metre
50mm	White, Grey & Black	C368	3 metre

Pushfit Waste Pipe - PP

For ease of use and economy, there is no better alternative than Polypropylene in push-fit waste systems.

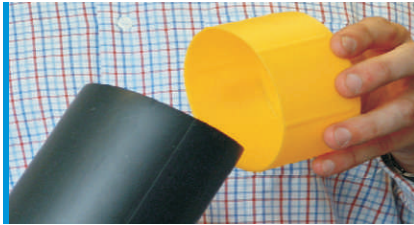
Polypropylene pipe is manufactured to the dimensional tolerances of BS5254 and is compatible with most proprietary brands of fittings. The pipe is available in white, olive grey, standard grey and black. It can be printed with your company logo and legend. Please contact us for further details.



Pushfit Waste Pipe OD	Codes				Standard Length
	White	Grey	Black	Olive Grey	
19mm (overflow)	947	-	-	-	3 metre
32mm	961W	965G	966B	961OG	3 metre
40mm	955W	960G	364B	955OG	3 metre
50mm	365W	365G	365B	365OG	3 metre

Packaging

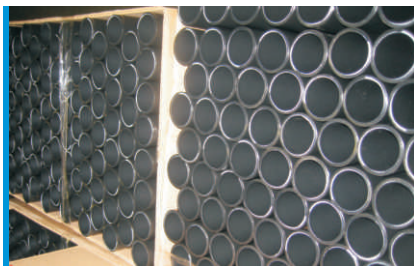
Rod Protection Tubes



Rod Protection Tubes are made from ABS material, strong, tough material to help in the protection of fishing rod tubes. Light-weight and re-usable. Special colours and printing are available to order.

Rod Protection Tube - OD	Code	Standard Length
Fly 2"	M285	5ft, 5'6", 6ft, 6'6"
Standard 2½"	M15/6/7/8	5ft, 5'6", 6ft, 6'6"
Jumbo 3"	M499	5ft, 5'6", 6ft, 6'6"

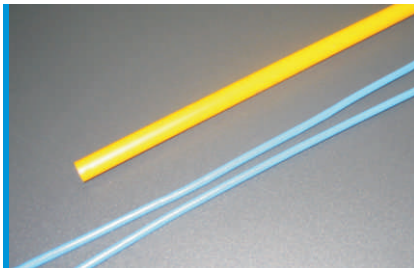
Core Tubes



Core Tubes can be manufactured in a wide variety of materials including PP, HDPE + ABS. An economical option is to utilise re-processed materials. Please contact our technical department for recommendations as we have already manufactured cores for paper, polythene, rubber and carpet!

Core Tube - OD	Code	Wall	Length
76mm black PP	9685	4 metre	Up to 4 metre
76mm black PP	9685	7 metre	Up to 4 metre
100mm HDPE	9685	6 metre	4 metre to 6 metre

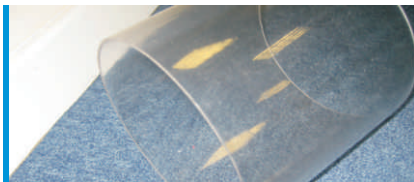
Welding Rod



Plastic welding is now almost as commonplace as conventional welding. A range of circular or triangular welding rod profiles for both HDPE and Polypropylene are available. Standard Plastic Welding Rod available in black, white, natural and grey. Special colours on request.

Welding Rod - Profile	Material	Tolerance	Spool Size
Circular 3mm dia	PP -CP	(+0 -0.3mm)	3kgs
Circular 4mm dia	PP -CP	(+0 -0.4mm)	3Kgs
Circular 5mm dia	PP -CP	(+0.1 -0.4mm)	3Kgs
Circular 3mm dia	HDPE	(+ 0 -0.3mm)	3Kgs
Circular 4mm dia	HDPE	(+0 -0.4mm)	3Kgs
Circular 5mm dia	HDPE	(+0.1 -0.4mm)	3Kgs
Triangular section	PP -CP	(+0.2 -0.2mm)	3Kgs
Triangular section	HDPE	(+0.2 -0.2mm)	3Kgs

Clear Tubes



Clear Tubes can be manufactured in crystal clear styrene or PVC. For Food Quality applications or situations where high impact strength is important, clear Polypropylene may be the answer.

Clear Tubes - OD	Nominal Wall	Standard Length
PP - 40mm	1 metre	1 metre

Packaging Tubes



Plastic packing tubes in a wide variety of polymers and sizes. Designed to fit standard vending machines and are completely non-toxic. Packing tubes for documents, maps and artwork are also available. The table below shows a small selection of available sizes. Please consult our sales department for your specific requirement.

Packaging Tube - PP	OD	Wall	Code	Standard Length
Black ref. 3 1060mm	29mm	1mm	3	1060mm
Black ref. 4 1060mm	43mm	1.5mm	4	1060mm
Black ref. 5 1060mm	57mm	1.5mm	5	1060mm
Clear PN 1081 1230mm	52mm	1mm	PN 1081	1230mm
Vending PN 1164 85mm	77mm	1mm	PN 1164	85mm

Mouldings and Profiles

Plastic Mouldings and Fittings

We manufacture - mould and/or fabricate - specialised mouldings to complement customers' extrusion requirements. If you are looking for end caps, elbows, spacers or handles, we may be able to help with bespoke design and tooling support and expert advice.

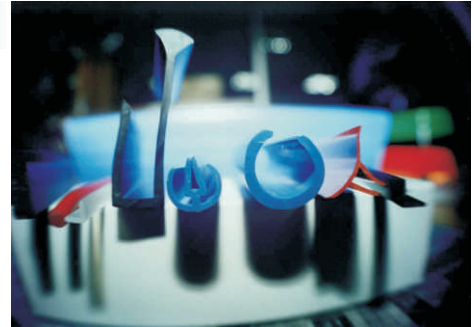


Profiles

Profiles can be extruded from own range of tooling or customers' tooling can be used to extrude the desired shape and size in a range of different materials. Naylor have supplied profiles for a wide range of applications including shopfitting and furniture.

We offer:

- Bespoke designs
- Expert advice
- Rigid and flexible material options
- Tool design
- Customised lengths and colours
- Unequalled customer service



Profiles	Standard Length
Size on request	On request

Spacer Tubes

Spacer tubes are available in any colour and material.

Please contact us with your specification.



Spacer Tubes - Size	Standard Length
From 2mm up to 210mm	On request

Pliable Conduits

Flexible Ducting - PP



A new range of FLEXIBLE plastic ducting made from Polypropylene (PP). The tubing is manufactured in a range of sizes & colours, in 2 standard gauges. Short pieces or specific length coils are available to order.

This range is ideally suited for applications where chemical resistance and food quality properties are required. Most standard colours are available. Polypropylene is also available in natural or translucent finish.

Flexible Conduit - OD	Rating	Standard Length	Nominal ID
16mm	250	100m	11mm
16mm	750N	100m	11mm
20mm	250N	50m	15mm
20mm	750N	50m	15mm
25mm	250N	50m	19mm
25mm	750N	50m	19mm
32mm	250N	50m	24.5mm
32mm	750N	50m	24.5mm

Flexible Tubes - Small Bore

Small bore flexible tubing is available in the following; EVA, Flexible PVC, LDPE, HDPE, Polypropylene.

For extra flexibility, a corrugated tube may be the answer such as the example shown which has a normal bore of 10mm.



Flexible Conduit - HDPE



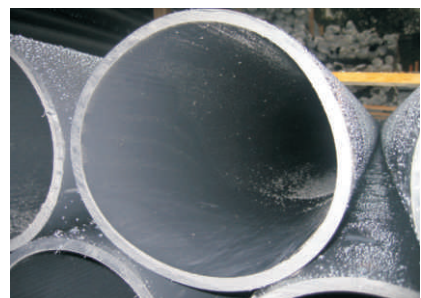
A new range of FLEXIBLE plastic ducting made from High Density Polyethylene (HDPE). The duct is manufactured in a range of sizes & colours, in 2 different gauges, depending on the crush resistance needed for your particular application.

The range has been independently tested so that product specifications conform to the latest standard BS EN 61386 -22 - 2004. Standard colours of green, white, black, red or blue are available. Non-standard colours are available on request.

Flexible Conduit - OD	Code	Standard Length	Nominal ID
HDPE 16mm	250N	100 metre	11mm
HDPE 16mm	750N	100 metre	11mm
HDPE 20mm	250N	50 metre	14.7mm
HDPE 20mm	750N	50 metre	14.7mm
HDPE 25mm	250N	50 metre	18.8mm
HDPE 25mm	750N	50 metre	18.8mm
HDPE 32mm	250N	50 metre	24.4mm
HDPE 32mm	750N	50 metre	24.4mm

Flexible Tubes - Large Bore

Large bore flexible tubing in the following polymers; EVA, Flexible PVC, LDPE, HDPE, MDPE, Polypropylene.



Sports and Leisure

Show Jump Poles



Show Jump Poles are widely used. Our Poles are made from extremely tough and resilient Polypropylene material. Special colours and configurations are available to order. Superior welded construction and added UV stability mean that these poles are built to last.

Show Jump Poles - OD	Code	Standard Length	Configuration
100mm	S971	3 metre	5 bands x 2 colours

Special Projects

Smoke Aspiration Pipes



Manufactured from high quality ABS, printed with your corporate logo + message; red as standard, other colours to order.

Smoke Detection Pipe - OD	Standard Length
25mm	3 metre to 6 metre
32mm	3 metre to 6 metre

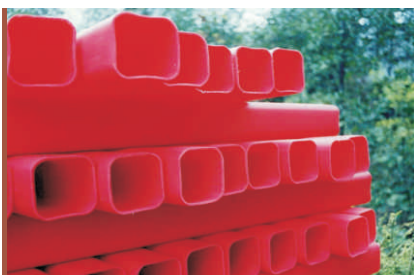
Special Projects

From Hula Hoops to Rocket Launcher tubes.



Traffic Management

Square Tubes



A variety of rectangular and square tubes. These tubes are available in all our standard materials in a section of wall thickness and can be supplied cut to your required length. Rectangular tubes manufactured in HDPE Polypropylene or ABS can be easily colour matched to your own specification.

Square Tubes	Material	Wall	Code	Application
OD 100 x 100mm	HDPE	3.5mm	603	Traffic post, storage tube
OD 80 x 80mm	HDPE	3mm	1057	plastic post
OD 76 x 50mm	Polyprop	3.5mm	1045	welded fences
OD 50 x 28mm	ABS	3.5mm	1067	frame construction
ID 25 x 25mm	Polyprop	3mm	1043	frame construction
ID 150 x 100mm	HDPE	6mm	683	forklift battens
OD 38 x 25mm	HDPE	3mm	385	laths for roll stacking
OD 20 x 20mm	HIPS	1mm	003	frame construction
OD 120 x 25mm	Polyprop	3mm	983	welded fences, sheet separators